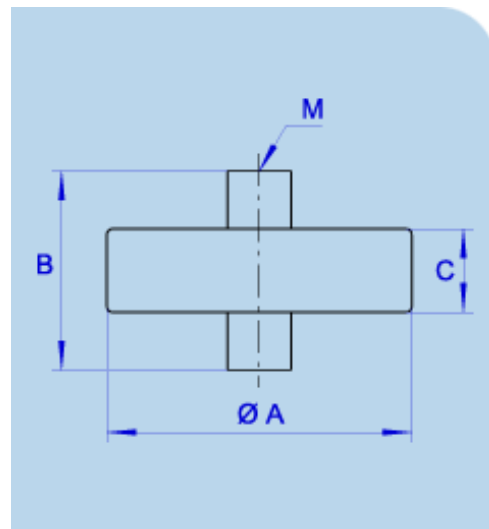
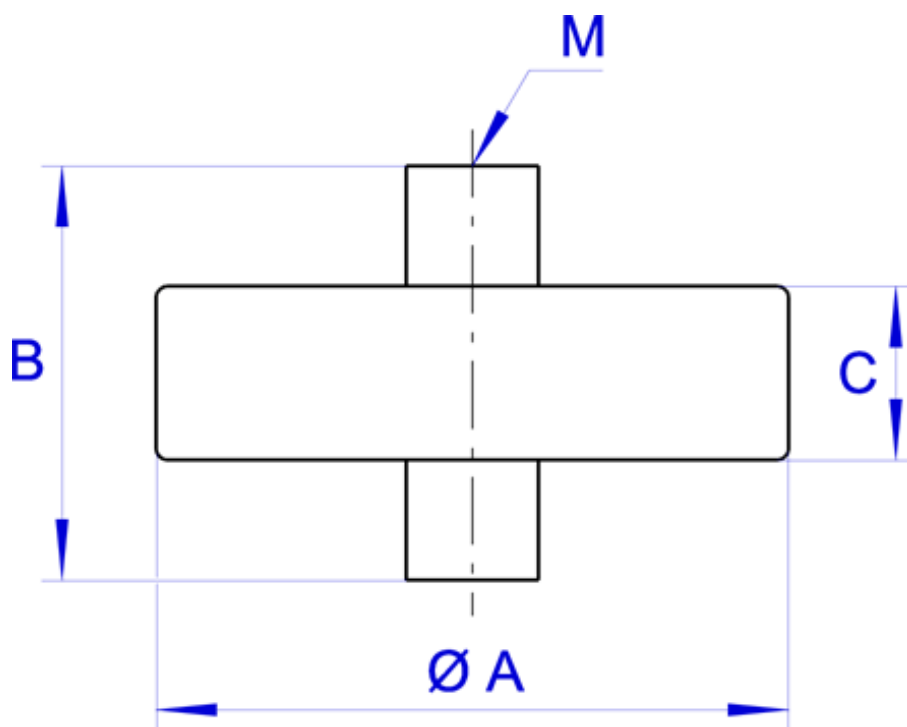


Condensateurs céramique de puissance  
refroidis par air - Type I

Type P $\emptyset$  (40-55)



Plan



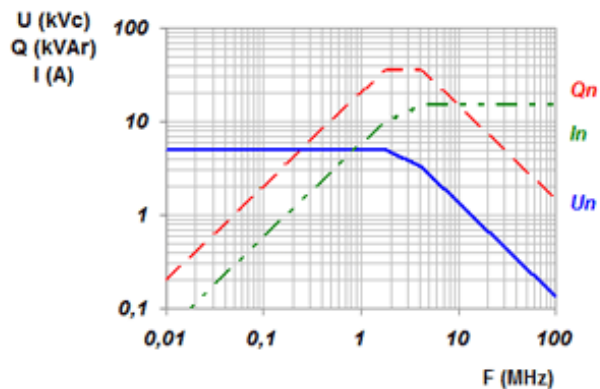
## Caractéristiques

CARACTERISTIQUES ELECTRIQUES									DIMENSIONS			
Références	Capacité pF ± 10%	$\epsilon_r$	Tension		Fréquences		Puissance réactive nominale (kVar)	Intensité nominale efficace (A)	A (+3mm)	B (+3mm)	C (+2mm)	$\phi M$
			Un (kVc)	Utest (kVdc)	F1 (Mhz)	F2 (Mhz)						
<b>40 581 095</b>	30 pF	17	15	30	0,71	79,50	15 kVar	15 A	40	33,5	30	6
<b>40 584 091</b>	40 pF	17	10	20	1,19	59,63	15 kVar	15 A	40	33,5	15	6
<b>40 558 095</b>	50 pF	17	15	30	1,13	17,89	40 kVar	15 A	55	37	30	6
<b>40 556 095</b>	80 pF	17	15	30	0,71	11,18	40 kVar	15 A	55	33,5	30	6
<b>40 583 091</b>	100 pF	17	10	20	1,27	8,94	40 kVar	15 A	55	33,5	15	6
<b>40 705 091</b>	100 pF	75	5	10	3,18	14,31	25 kVar	15 A	40	33,5	15	6
<b>40 706 091</b>	250 pF	75	5	10	1,78	4,09	35 kVar	15 A	40	33,5	15	6
<b>40 707 091</b>	250 pF	75	8	16	0,80	3,58	40 kVar	15 A	55	33,5	15	6
<b>40 588 091</b>	500 pF	75	7,5	15	0,45	1,79	40 kVar	15 A	55	33,5	15	6
<b>40 588 335</b>	500 pF	75	7,5	15	0,17	8,48	15 kVar	20 A	55	21	15	8

## Courbes

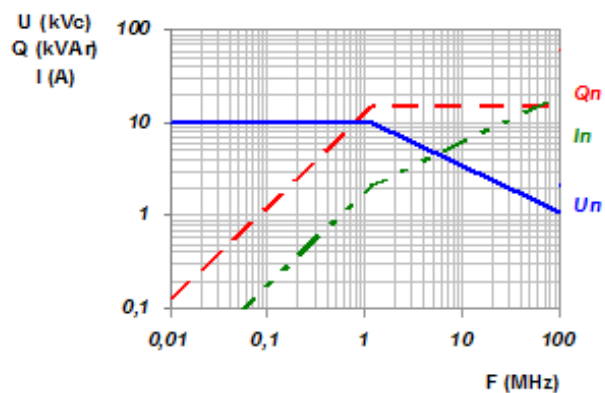
**40 581 095**

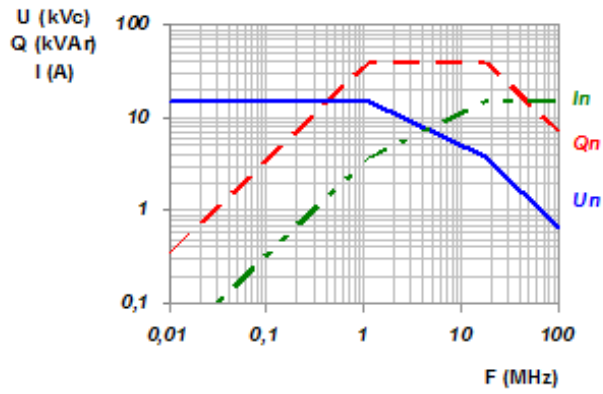
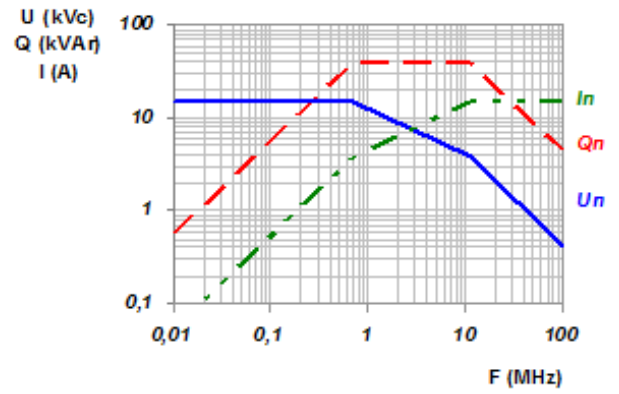
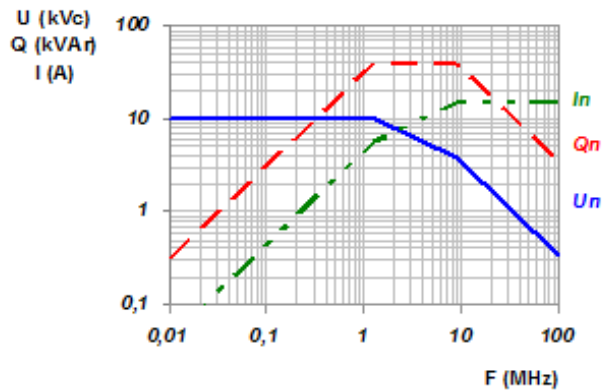
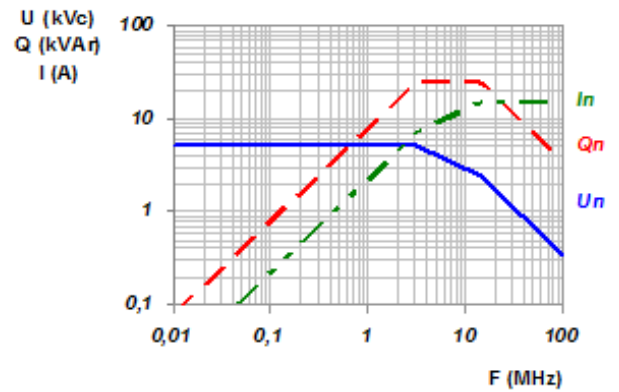
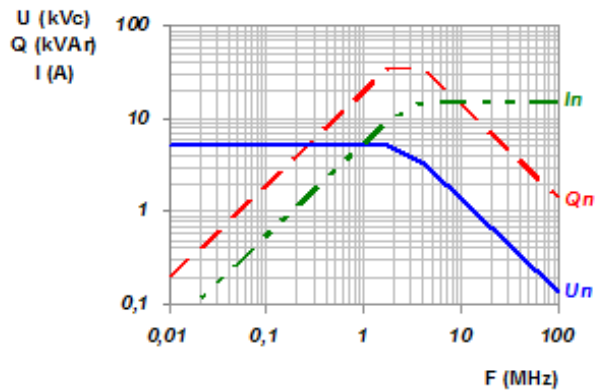
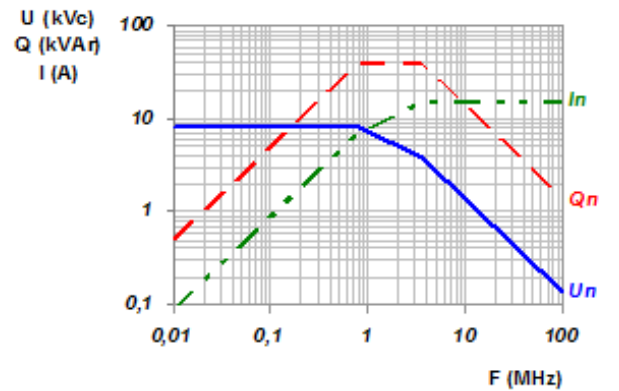
**30 pF**



**40 584 091**

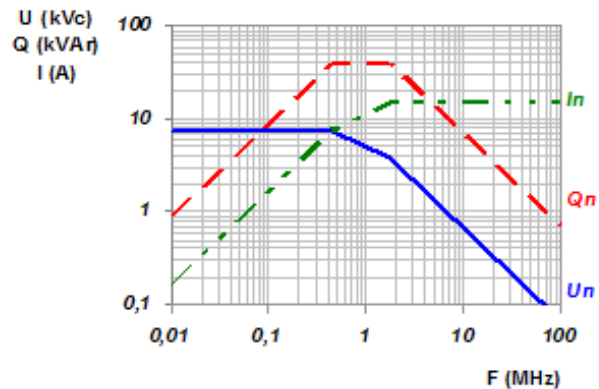
**40 pF**



**40 558 095****50 pF****40 556 095****80 pF****40 583 091****100 pF****40 705 091****100 pF****40 706 091****250 pF****40 707 091****250 pF**

40 588 091

500 pF



40 588 335

500 pF

